



GUARDIAN[®]

Always on Duty.



VH4 + VHE Split Heat Pump System

Reliable, year-round comfort.

Experience reliable efficiency and year-round comfort with the VH4 side discharge split system heat pump and VHE multi-position, LEW vertical wall mount, or RET ceiling mount air handler. Engineered for quiet performance and installation flexibility, this system delivers the complete heating and cooling solutions homeowners need, at a price that aligns with today's expectations.





The Guardian VH4 side discharge split system heat pump delivers efficiency, flexibility, and quiet comfort at a price point that meets today's standards.



Energy Efficiency & Cost Savings

- Factory-installed accumulator protects the compressor from liquid refrigerant and enhances system efficiency, reducing energy consumption and operational costs.
- Entry-level model with 14.32 SEER2 cooling efficiency and 7.5 HSPF2 heating efficiency, meeting the latest DOE minimum efficiency targets.
- Tube-in-fin coils for maximum efficiency and durability.

Quiet, Reliable Performance

- Quiet operation down to 0°F ensures comfort even in cold climates.
- Low-sound fan design for reduced noise levels indoors and outdoors.
- Factory-installed crankcase heater prevents refrigerant migration and maintains compressor oil temperature for reliable operation.

Installation Flexibility

- Maximum line set length of 246 ft. and maximum lift of up to 98 ft. allow for versatile installation options.**
- Side discharge and small footprint for space-constrained areas.
- Easy-to-follow wiring diagrams for fast, simple installation and servicing.

VH4 Product Line 14.3 SEER2/7.5 HSPF2 | 1.5 – 5 tons[‡]

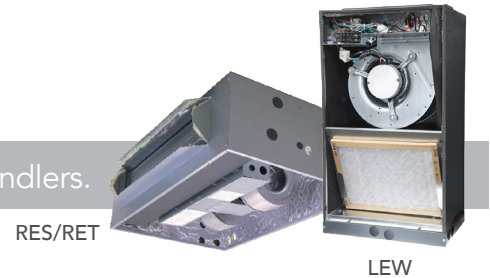
SKU	Tonnage	Weight (lb)	Height (in.)	Width (in.)	Depth (in.)	Liquid Connection (in.)	Vapor Connection (in.)
VH418E2S11	1.5	98.1	26 3/8	33 7/8	12 1/4	3/8	5/8
VH424E2S11	2	98.1	26 3/8	33 7/8	12 1/4		
VH430E2S11	2.5	113.5	29 1/2	35 3/7	13 3/8		

[‡] Only 1.5, 2 and 2.5 Tons are available. Other sizes will be released later in 2026.

* All limited warranties are subject to terms, conditions and exclusions set forth in the product's limited warranty statement. See applicable limited warranty statement for details.

**Only applies to some sizes.

The Guardian VH4 is also compatible with LEW and RES/RET air handlers.



The Guardian VHE is perfect for homeowners seeking a complete, affordable heating and cooling solution.

- Works perfectly with our air conditioners or VH4 heat pumps
- Constant torque EC motor with embedded software for precise speed control and consistent airflow
- Quiet operation
- High-efficiency rifled copper tube enhanced aluminum fins deliver maximum heat transfer
- Solid access panel available for use with end return installations
- 10-Year parts limited warranty

VHE Product Line

SKU	Height (in.)	Width (in.)	Opening Widths (in.)		Wiring Knockouts		Liquid Connection (in.)	Vapor Connection (in.)
					Control (in.)	Power (in.)		
VHE18B5YK2SS1	45	17 1/2	14 1/4	16	7/8	1 3/4	3/8	5/8
VHE24B5YK2SS1	45	17 1/2	14 1/4	16	7/8	1 3/8		
VHE30B5YK2SS1	45	17 1/2	14 1/4	16	7/8	7/8		



* All limited warranties are subject to terms, conditions and exclusions set forth in the product's limited warranty statement. See applicable limited warranty statement for details.

© 2026 JC Residential and Light Commercial LLC. All rights reserved. www.guardianhomecomfort.com

39088 031726